

Andromeda™

GROW LIGHTS

by



- Waterproof, robust luminaires
- Half the power and less maintenance
- HPS & MH equivalent light spectrums
- Purposely designed for Greenhouses/Growth Rooms

Empyrean Lighting's™ Andromeda™

series of luminaires has a reputation of excellence developed in mining, large aquarium, and heavy industrial applications worldwide. The success of this series is due to our patented design which allows for unparalleled thermal management, performance and versatility in challenging environments.

The Andromeda™ Grow Light range maintains this pedigree, and having been developed through consultation with leading plant biologists, is at the forefront of innovation for growing applications.

BENEFITS OF ANDROMEDA™ GROW LIGHTS

- USES 50%-75% LESS ELECTRICITY THAN FLUORESCENTS & HIGH INTENSITY DISCHARGE LUMINAIRES
- LIFESPAN OF 60,000 HRS+ (TO L70)
- IP66 (WATERPROOF)
- ROBUST CONSTRUCTION, PERFECT FOR TOUGH & CHALLENGING CONDITIONS
- VERSATILE, FLEXIBLE DESIGN
- SUPERIOR THERMAL MANAGEMENT
- ULTRA HIGH QUALITY DIODES
- SMALL LENS SURFACE AREA
- HIGH PERFORMANCE DRIVERS
- LOW INRUSH & OPERATING CURRENTS
- INSTANT ON/OFF
- ABILITY TO TAILOR LIGHT SPECTRUM
- LOCALLY DESIGNED & SUPPLIED



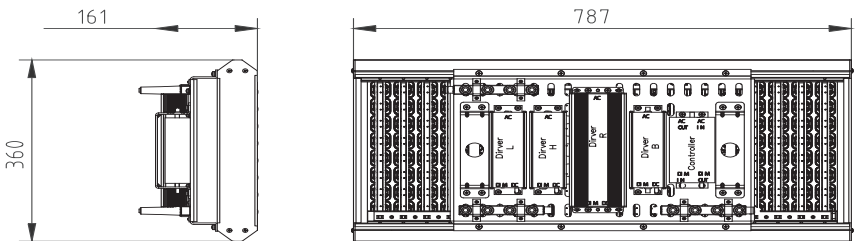
PRODUCT INFORMATION

PRODUCT CODE	Andromeda-GrowFlood-420W
DIMENSIONS	787mmL x 360mmW x 161mmD
INGRESS PROTECTION	IP65
WEIGHT	16kg
LIGHT SOURCE	High Power Osram LED Diodes
LENS	High or Low Ceiling
HOUSING	AL 6063 (Aluminium Marine Grade)
BRACKET MATERIAL	Steel (ST12)
FRAME COLOUR	Silver
WARRANTY	5yrs

TECHNICAL SPECIFICATIONS

INPUT VOLTAGE	90V-305VAC, 50/60Hz
DIMMABLE	Yes - On/Off & Full Luminaire Control with RS485 Controller
LIFESPAN	50,000 hours (to L70/B10)
POWER	420W
POWER FACTOR	>0.97
PHOTON FLUX	1258.25 / 1247.19 (μ mol/s)
PHOTON FLUX EFFICACY	3.045 / 3.072 (μ mol/J)
OPERATING TEMPERATURE	-40°C to +55°C

SCHEMATIC OF ANDROMEDA-GROWFLOOD-420W



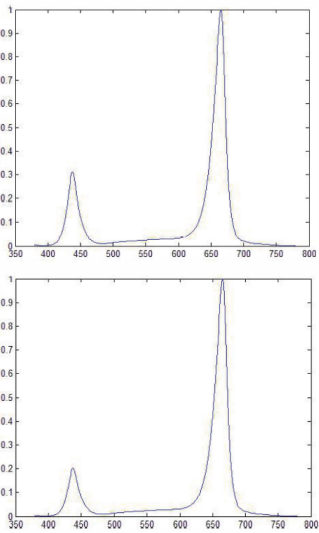
SPECTRAL OPTIONS

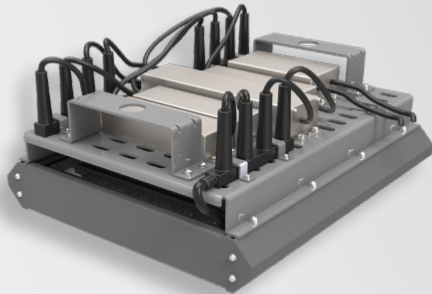
3 x Blue 8 watt rails (450nm)
 13 x Red 8 watt rails (640nm)
 2 x White 8 watt rails (6,000K)
 2 x Warm 8 watt rails (3,000K)

Blue (400-499)	20.39%
Green (500-599)	6.82%
Red (600-699)	71.25%
Infrared (700-780)	1.54%

2 x Blue 8 watt rails (450nm)
 14 x Red 8 watt rails (640nm)
 2 x White 8 watt rails (6,000K)
 2 x Warm 8 watt rails (3,000K)

Blue (400-499)	14.89%
Green (500-599)	6.84%
Red (600-699)	76.65%
Infrared (700-780)	1.62%





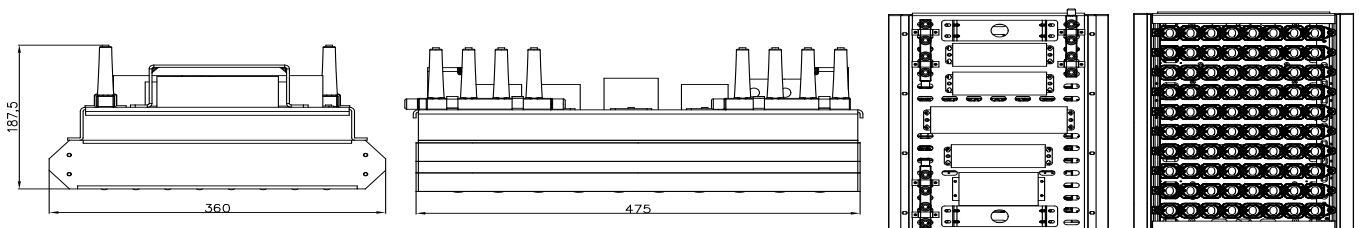
PRODUCT INFORMATION

PRODUCT CODE	Andromeda-GrowFlood-210W
DIMENSIONS	475mmL x 360mmW x 187.5mmD
INGRESS PROTECTION	IP65
WEIGHT	9kg
LIGHT SOURCE	High Power Osram LED Diodes
LENS	High or Low Ceiling
HOUSING	AL 6063 (Aluminium Marine Grade)
BRACKET MATERIAL	Steel (ST12)
FRAME COLOUR	Silver
WARRANTY	5yrs

TECHNICAL SPECIFICATIONS

INPUT VOLTAGE	90V-305VAC, 50/60Hz
DIMMABLE	Yes - On/Off & Full Luminaire Control with RS485 Controller
LIFESPAN	50,000 hours (to L70/B10)
POWER	210W
POWER FACTOR	>0.97
PHOTON FLUX	623.6 / 551.88 (μ mol/s)
PHOTON FLUX EFFICACY	3.072 / 2.52 (μ mol/J)
OPERATING TEMPERATURE	-40°C to +55°C

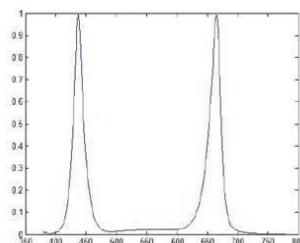
SCHEMATIC OF ANDROMEDA-GROWFLOOD-210W



SPECTRAL OPTIONS

4 x Blue 8 watt rails (450nm)
5 x Red 8 watt rails (640nm)
1 x White 8 watt rails (6,000K)

Blue (400-499)	44.91%
Green (500-599)	4.03%
Red (600-699)	50.22%
FarRed (700-780)	0.84%



1 x Blue 8 watt rails (450nm)
7 x Red 8 watt rails (640nm)
1 x White 8 watt rails (6,000K)
1 x Warm 8 watt rails (3,000K)

Blue (400-499)	14.89%
Green (500-599)	6.84%
Red (600-699)	76.65%
Infrared (700-780)	1.62%

