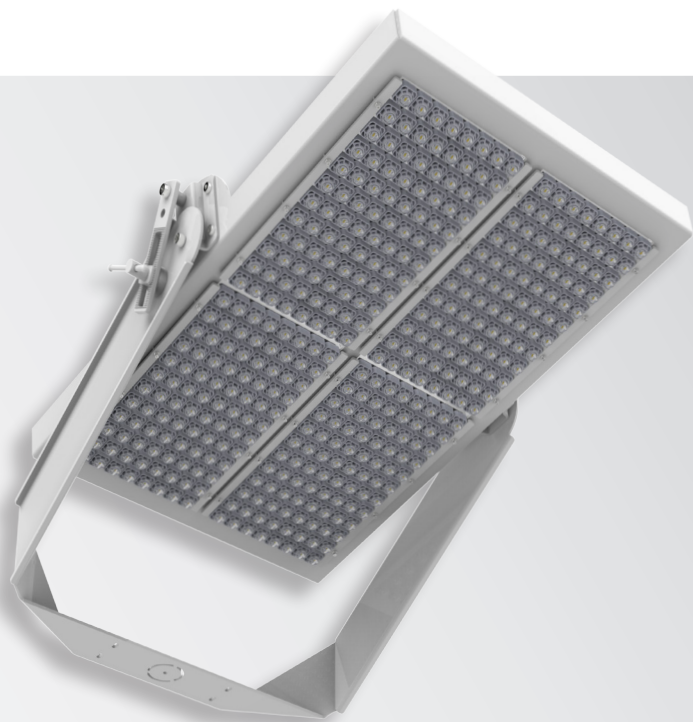


Andromeda™ C High Mast

CERAMIC LED HIGH MAST LUMINAIRE



PRODUCT INFORMATION

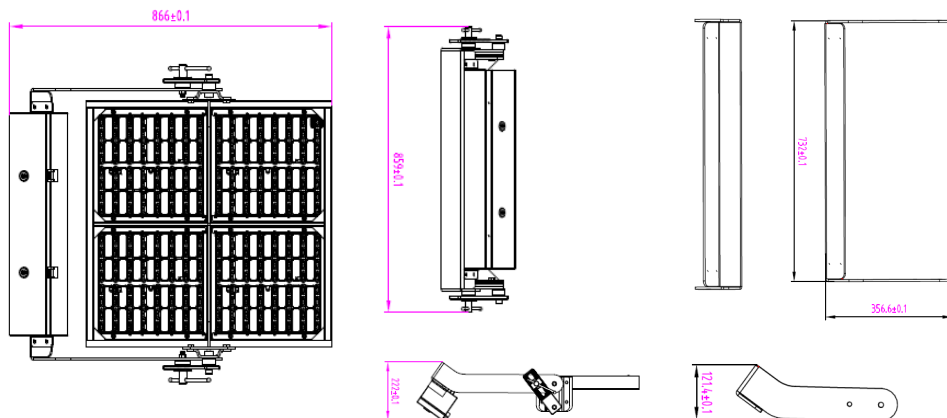
LIGHT SOURCE	Nichia High Power LED
HOUSING	6063 Aluminium (Marine Grade) Ceramic Diode Seat with Polycarbonate Pixel Rails ST12
BRACKET MATERIAL	Trunnion Arm
BRACKET TYPE	Silver, White, Black
FRAME COLOUR	IK10
MECHANICAL IMPACT RESISTANCE	4 x Drivers per Light. Remote mounted at base of pole internally. Optional external waterproof enclosure for exterior pole mounting.
DRIVER MOUNTING	IP66
IP RATING	-40°C to 55°C
OPERATING TEMP	

TECHNICAL SPECIFICATIONS

INPUT VOLTAGE	90-305VAC, 50/60Hz (Standard), Varying input available from 24V DC to 480V.
DIMMABLE	Non-dimmable standard
LIFESPAN	60,000 hours to L70 B10
POWER	1000W
POWER FACTOR	0.97
BEAM ANGLE	Distribution Ranges - Refer to lens options page IESNA Type I,II,III, IV & V distribution
LUMINOUS EFFICACY	135 lm/W
CCT	5,000-5,500K Cool White >70 (CRI) Standard

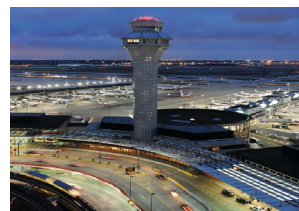
Additional Options - Frame options 304SS & 316SS. Dimmable with 0-10V, DALI, PE Cell or Nema 7. CCT Options - ~4000K Natural White & ~3000K Warm White. Shielding can be added to all sides if required.

SCHEMATIC OF ANDROMEDA C HMAST 1000W + BRACKET



Luminaire & Bracket - 36kg | Optional IP65 Driver Box*-15.5kg
*Drivers can be mounted remotely

TYPICAL APPLICATIONS



PRODUCT CODE	POWER	OUTPUT (LUMENS)	INPUT CURRENT (mA)	LENGTH (MM)	WIDTH (MM)	DEPTH (MM)	WEIGHT (KG)
Andromeda-C-HMast-1000	1000W	131,000 - 135,000	800mA	866	859	222	51.5 kg